



Export to PDF

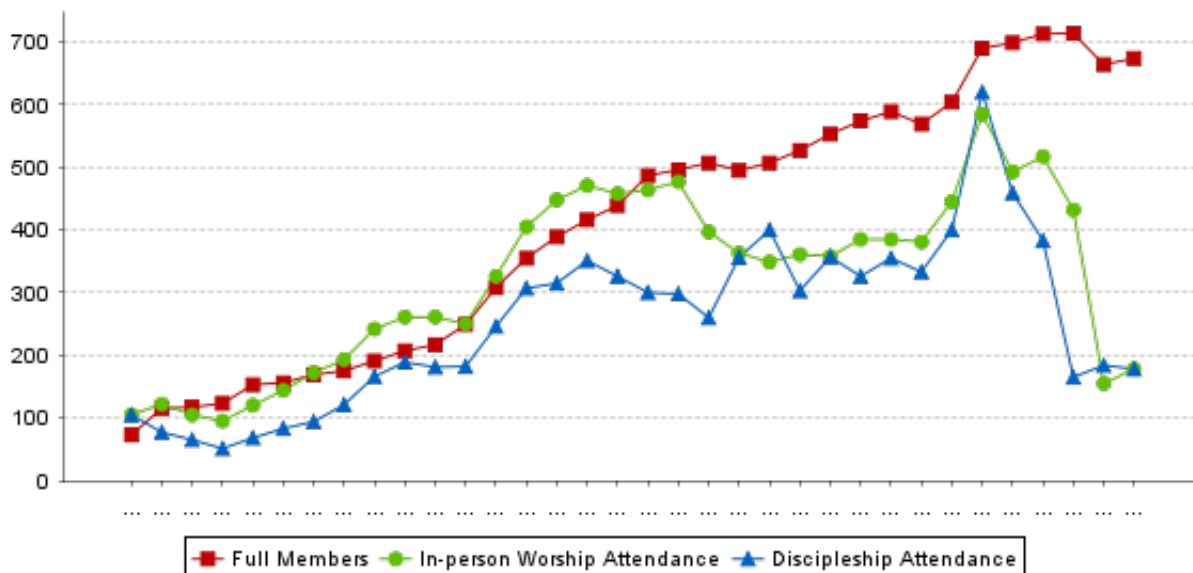
prev 1 next

# Statistical Summary Report

**Church:** Murrieta Gateway Church of the Nazarene  
**Status:** Organized  
**Organization Date:** 10 June 1989

**District:** Southern California  
**Primary Language:** English

Membership and Attendance



## Decadal (2013-2023) Information:

|   |         |   |        |
|---|---------|---|--------|
| Decadal Full Membership Change:         | 21.88%  | Annual Avg. Full Membership Change:         | 2.00%  |
| Decadal Worship Attendance Change:      | -50.28% | Annual Avg. Worship Attendance Change:      | -6.75% |
| Decadal Discipleship Attendance Change: | -50.14% | Annual Avg. Discipleship Attendance Change: | -6.72% |

| Year | Conversions | New Nazarenes | Full Members | Fellowship Members | In-person Worship Attendance | Online Worship Attendance | Discipleship Accountability Care List | Discipleship Attendance | Tithes & Offerings Income | WEF Goal Met? | % WEF Goal Met | All Fund Goals Met? |
|------|-------------|---------------|--------------|--------------------|------------------------------|---------------------------|---------------------------------------|-------------------------|---------------------------|---------------|----------------|---------------------|
| 2023 | 3           | 9             | 674          | 0                  | 178                          | 79                        | 215                                   | 178                     | 747,412                   | Yes           | 100%           | No                  |
| 2022 | 24          | 3             | 664          | 0                  | 155                          |                           | 240                                   | 184                     | 715,424                   | Yes           | 100%           | Yes                 |
| 2021 | 0           | 2             | 714          | 0                  | 432                          |                           | 420                                   | 165                     | 766,342                   | Yes           | 107%           | Yes                 |
| 2020 | 6           | 16            | 713          | 0                  | 517                          |                           | 550                                   | 383                     | 845,297                   | Yes           | 163%           | Yes                 |
| 2019 | 23          | 15            | 699          | 0                  | 493                          |                           | 820                                   | 459                     | 834,680                   | Yes           | 156%           | Yes                 |
| 2018 | 300         | 84            | 690          | 0                  | 585                          |                           | 620                                   | 620                     | 829,983                   | Yes           | 131%           | No                  |
| 2017 | 75          | 31            | 604          | 0                  | 445                          |                           | 600                                   | 400                     | 1,102,026                 | Yes           | 100%           | Yes                 |
| 2016 | 18          | 13            | 569          | 0                  | 381                          |                           | 521                                   | 333                     | 923,832                   | Yes           | 138%           | Yes                 |
| 2015 | 16          | 19            | 589          | 0                  | 385                          |                           | 475                                   | 355                     | 1,152,794                 | Yes           | 133%           | Yes                 |
| 2014 | 11          | 33            | 574          | 0                  | 385                          |                           | 559                                   | 326                     | 968,252                   | Yes           | 104%           | Yes                 |
| 2014 | 11          | 33            | 574          | 0                  | 385                          |                           | 559                                   | 326                     | 968,252                   | Yes           | 104%           | Yes                 |
| 2013 | 10          | 32            | 553          | 0                  | 358                          |                           | 579                                   | 357                     | 847,415                   | Yes           | 126%           | Yes                 |
| 2012 | 5           | 21            | 527          | 0                  | 361                          |                           | 504                                   | 303                     | 892,811                   | Yes           | 105%           | Yes                 |
| 2011 | 10          | 13            | 507          | 0                  | 349                          |                           | 634                                   | 400                     | 865,306                   | Yes           |                | Yes                 |
| 2010 | 8           | 11            | 495          | 0                  | 363                          |                           | 471                                   | 356                     | 897,531                   |               |                | Yes                 |
| 2009 | 11          | 12            | 507          | 0                  | 397                          |                           | 508                                   | 260                     | 926,430                   |               |                | Yes                 |
| 2008 | 2           | 15            | 496          | 0                  | 477                          |                           | 506                                   | 298                     | 952,153                   |               |                | Yes                 |

|      |   |    |     |   |     |  |     |     |           |  |     |
|------|---|----|-----|---|-----|--|-----|-----|-----------|--|-----|
| 2007 | 4 | 41 | 487 | 0 | 464 |  | 503 | 300 | 1,052,707 |  | Yes |
| 2006 | 5 | 11 | 439 | 0 | 458 |  | 494 | 326 | 996,300   |  | Yes |
| 2005 |   | 19 | 416 | 0 | 471 |  | 664 | 351 | 996,342   |  | Yes |

Record of Goals Met are sometimes incomplete. Contact the General Secretary's Office to have the record updated.

SOURCE: General Secretary's Annual Reports, compiled by Research Services, Church of the Nazarene.