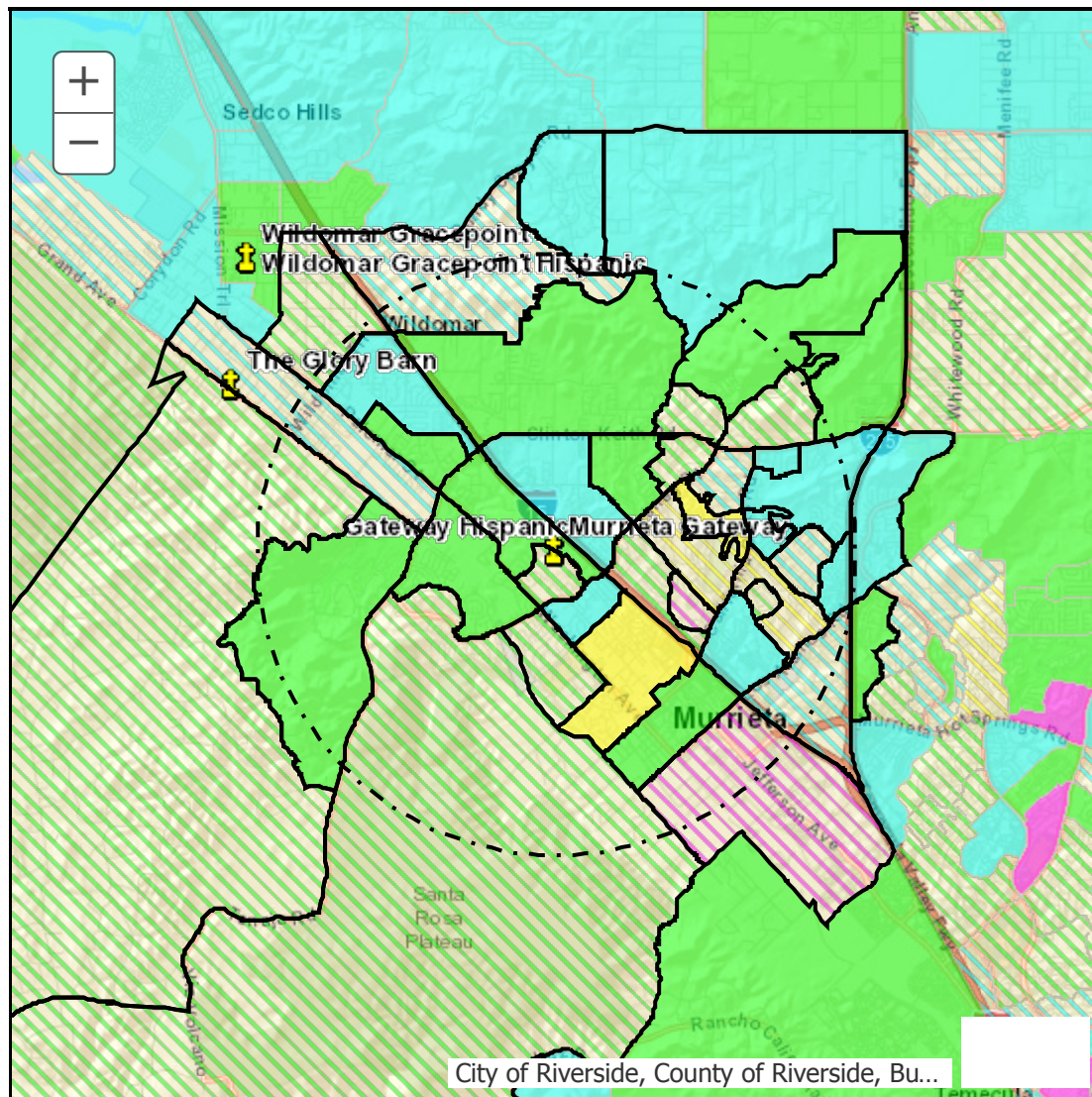


Community Demographics - Church of the Nazarene

Summary Overview Report



Above average growth expected

- Many young adults, Many families
- Few young adults, Many families
- Many young adults, Few families
- Few young adults, Few families

Below average growth expected

- Many young adults, Many families
- Few young adults, Many families
- Many young adults, Few families
- Few young adults, Few families

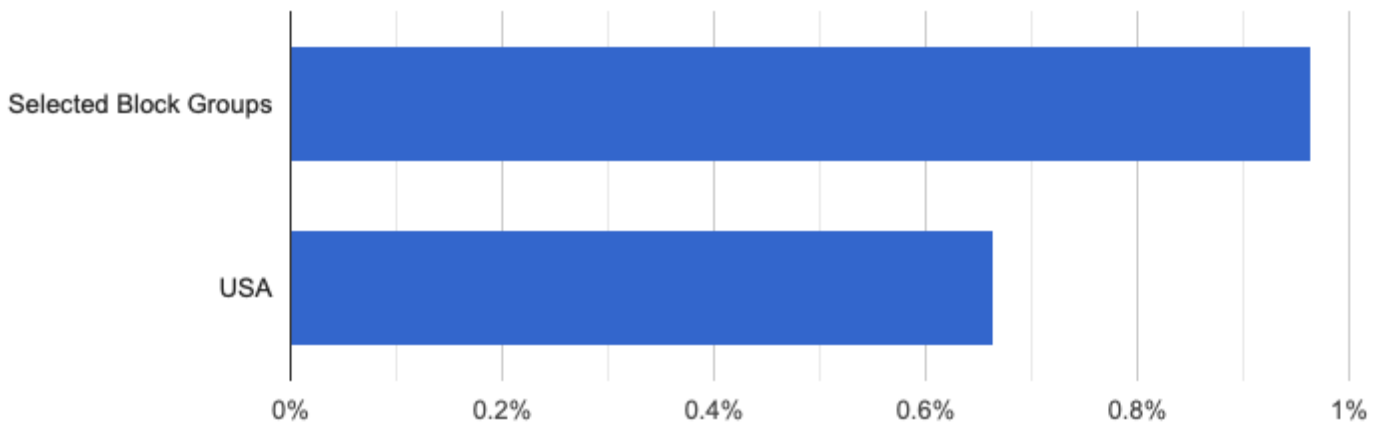
Block Groups selected: 42

Radius: 3 mile(s)

The total population is 95,960.

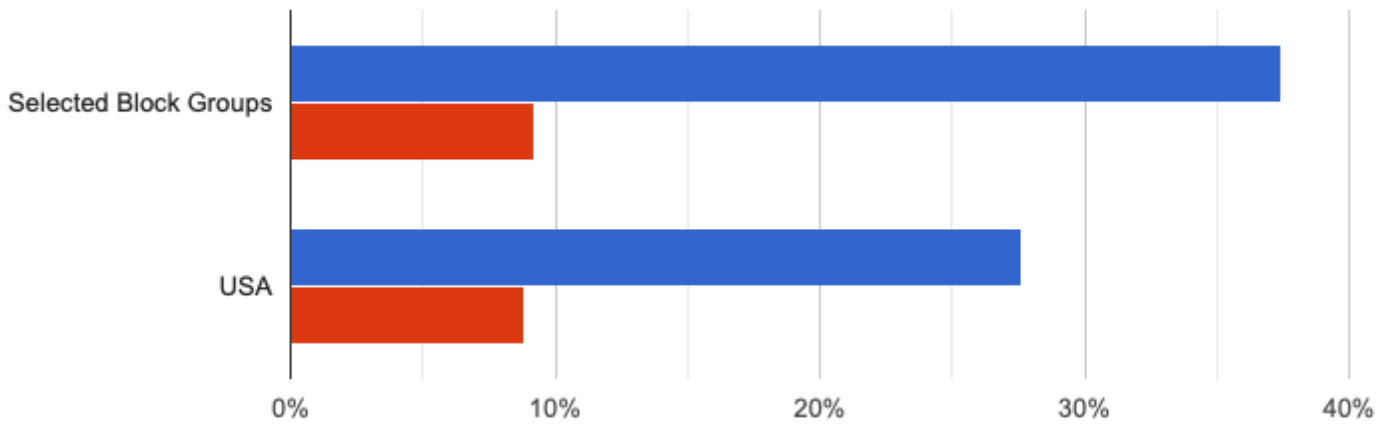
Annual Growth Rate

2014-2019



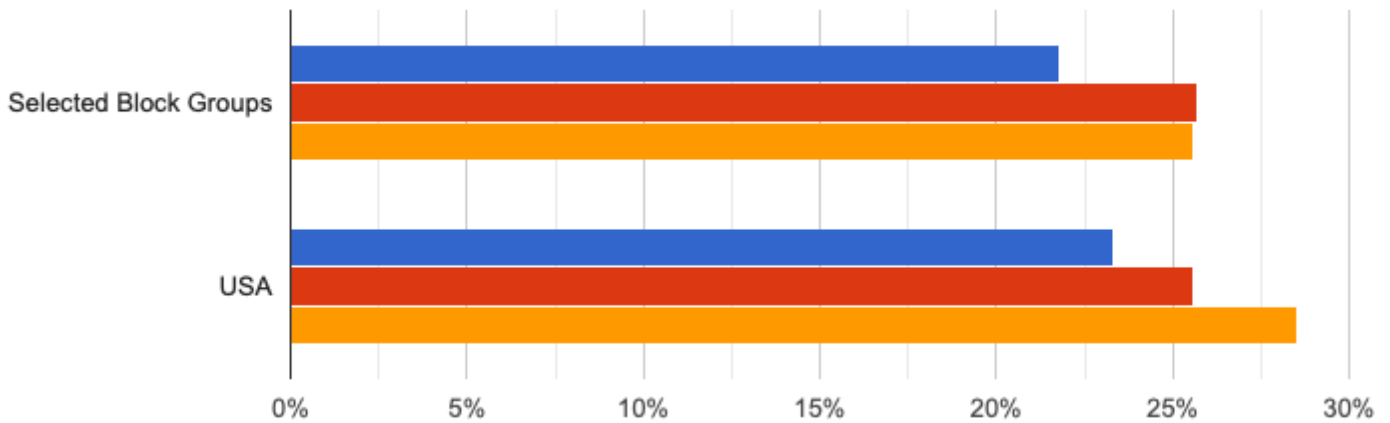
Households With Children

Children Present Single Parents

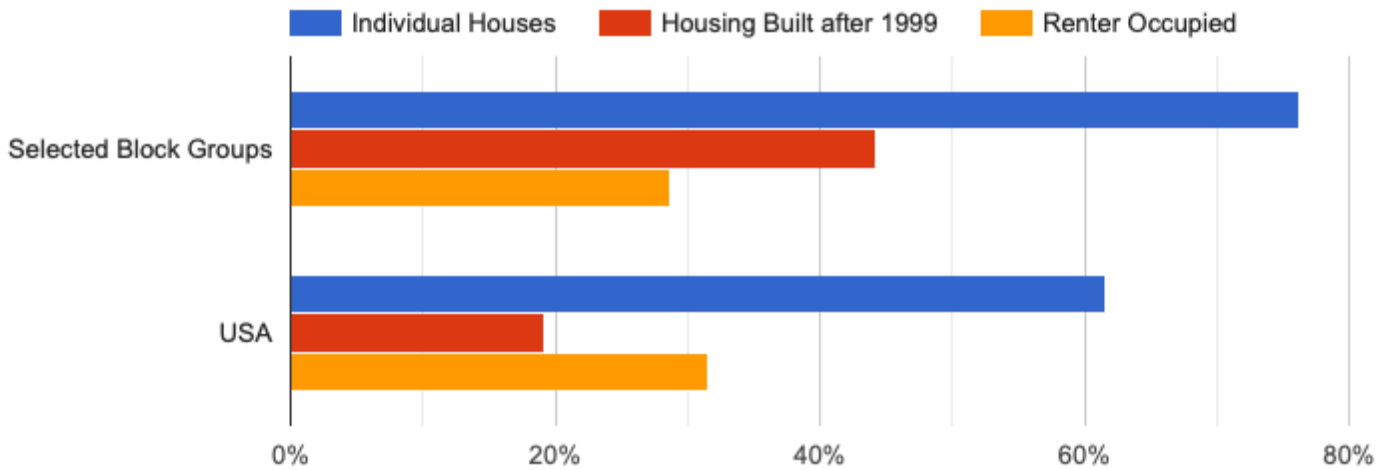


Adult Age Groups

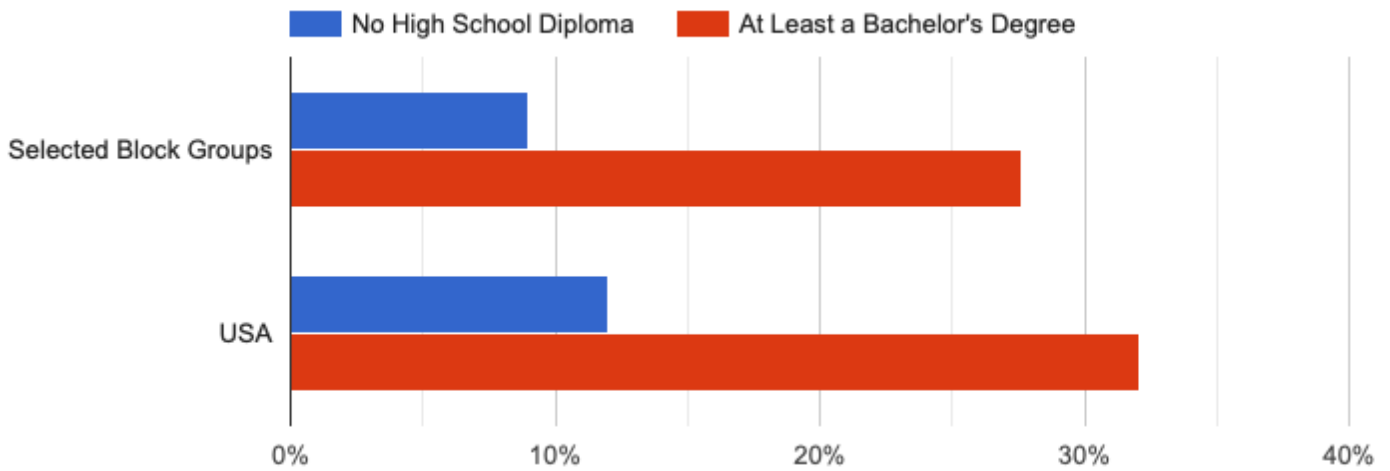
18 to 34 35 to 54 55 and up



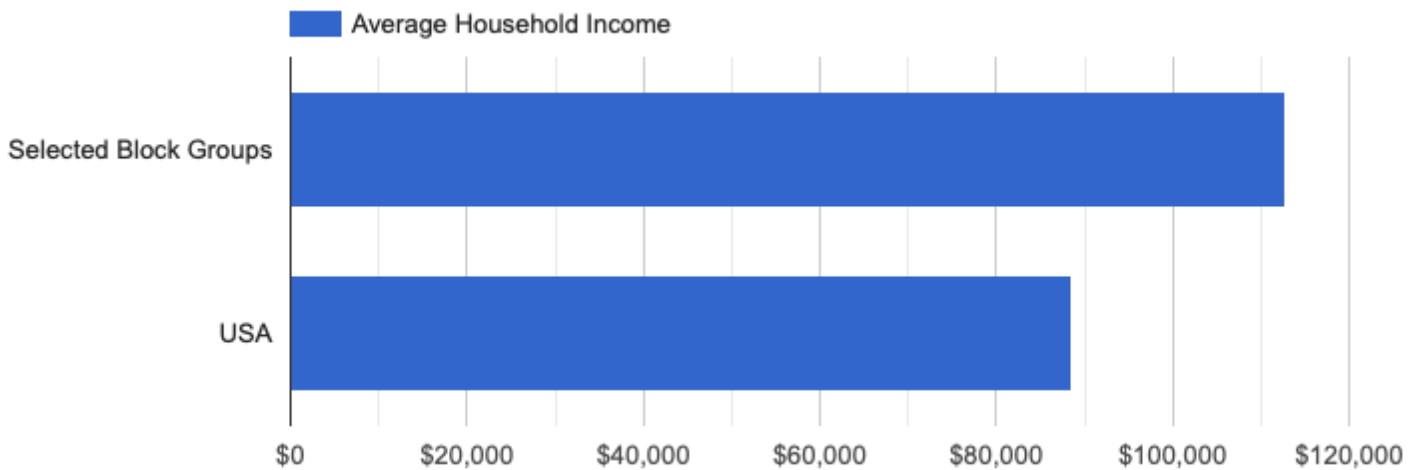
Housing Types

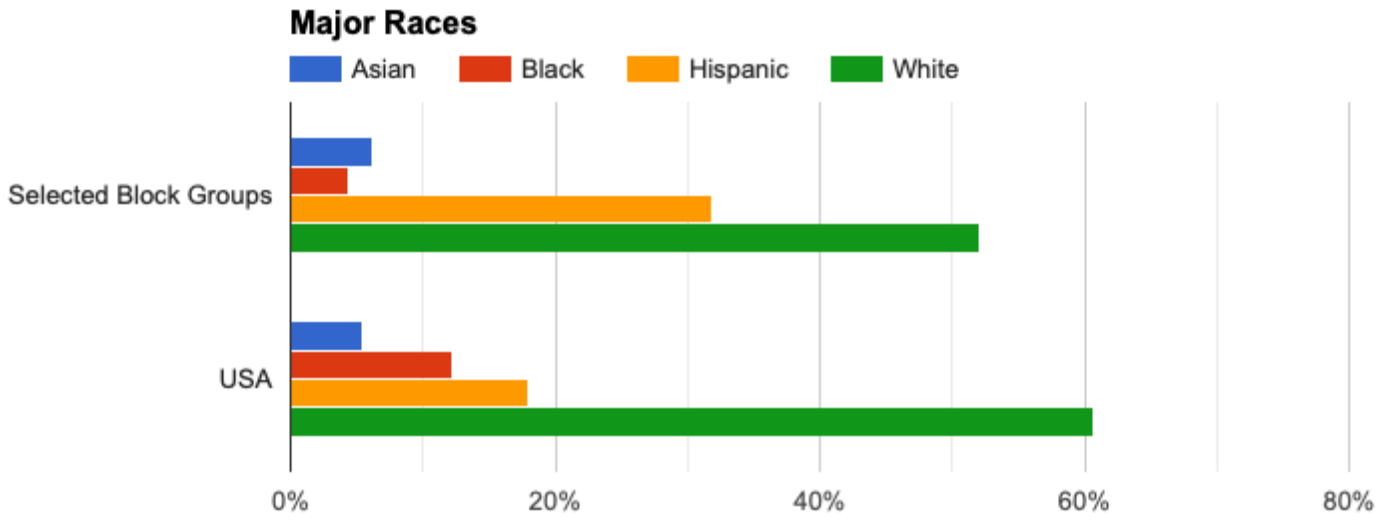


Educational Attainment of Adults



Average Household Income





©Church of the Nazarene 2021

Source: U.S. Census Bureau - ACS 2019 5-year estimates